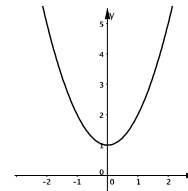
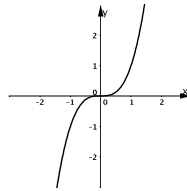
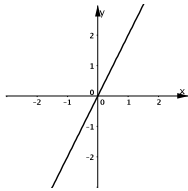


M_10_L_17 Symmetrie Tabellen						M_10_L_17 Symmetrie Tabellen						M_10_L_17 Symmetrie Tabellen					
$f(x) = x^2 + 1$						$f(x) = x^3$						$f(x) = 2x$					
x	-2	-1	0	1	2	x	-2	-1	0	1	2	x	-2	-1	0	1	2
y				2	5	y				1	8	y				2	4
M_10_L_17 Symmetrie Tabellen						M_10_L_17 Symmetrie Tabellen						M_10_L_17 Symmetrie Tabellen					
$f(x) = x^4 - 2x^2 + 1$						$f(x) = \sin(x)$						$f(x) = \cos(x)$					
x	-2	-1	0	1	2	x	-2	-1	0	1	2	x	-2	-1	0	1	2
y				0	9	y				0,8	0,9	y				0,5	-0,4
M_10_L_17 Symmetrie Tabellen						M_10_L_17 Symmetrie Tabellen						M_10_L_17 Symmetrie Tabellen					
$f(x) = \frac{x^2 - 9}{x^2 + 9}$						$f(x) = x^3 - x$						$f(x) = x + \frac{1}{x}$					
x	-2	-1	0	1	2	x	-2	-1	0	1	2	x	-2	-1	0	1	2
y				-0,8	-0,4	y				0	6	y	-2,5	-2	/		
M_10_L_17 Symmetrie Tabellen						M_10_L_17 Symmetrie Tabellen						M_10_L_17 Symmetrie Tabellen					
$f(x) = \frac{1}{x^2}$						$f(x) = \frac{1}{2}x^2 - 3$						$f(x) = \frac{1}{x^2 + 1}$					
x	-2	-1	0	1	2	x	-2	-1	0	1	2	x	-2	-1	0	1	2
y	0,25	1	/			y	-1	-2,5				y	0,2	0,5			
M_10_L_17 Symmetrie Tabellen						M_10_L_17 Symmetrie Tabellen						M_10_L_17 Symmetrie Tabellen					
$f(x) = 2^x + 0,5^x$						$f(x) = \frac{x}{x^2 + 1}$						$f(x) = \sin(x) \cos(x)$					
x	-2	-1	0	1	2	x	-2	-1	0	1	2	x	-2	-1	0	1	2
y	4,25	2,5	2			y				0,5	0,4	y				0,45	-0,38

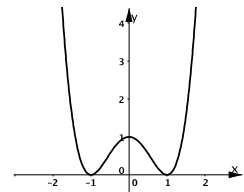
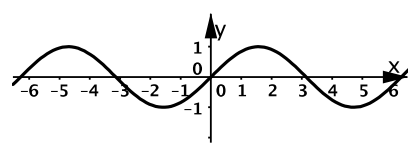
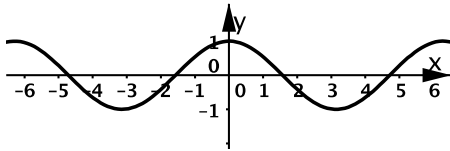


x	-2	-1	0	1	2	x	-2	-1	0	1	2	x	-2	-1	0	1	2
y	-4	-2	0	2	4	y	-8	-1	0	1	8	y	5	2	1	2	5

3

2

1

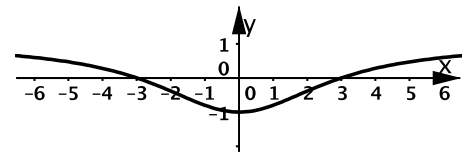
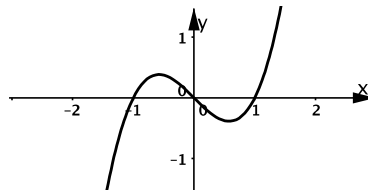
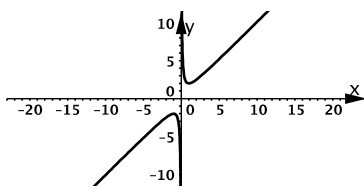


x	-2	-1	0	1	2	x	-2	-1	0	1	2	x	-2	-1	0	1	2
y	-0,4	0,5	1	0,5	-0,4	y	-0,9	-0,8	0	0,8	0,9	y	9	0	1	0	9

06

5

4

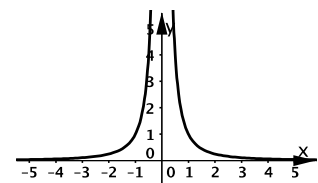
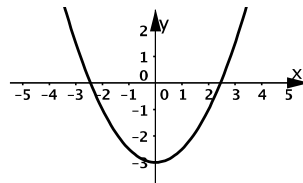
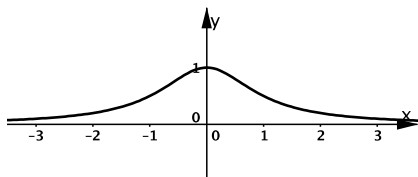


x	-2	-1	0	1	2	x	-2	-1	0	1	2	x	-2	-1	0	1	2
y	-2,5	-2	/	2	2,5	y	-6	0	0	0	6	y	-0,4	-0,8	-1	-0,8	-0,4

09

08

7

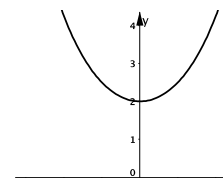
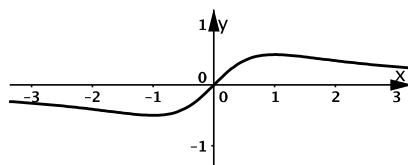
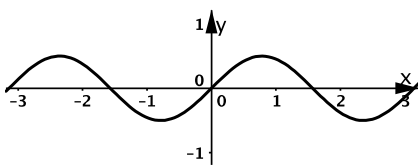


x	-2	-1	0	1	2	x	-2	-1	0	1	2	x	-2	-1	0	1	2
y	0,2	0,5	1	0,5	0,2	y	-1	-2,5	-3	-2,5	-1	y	0,25	1	/	1	0,25

12

11

10



x	-2	-1	0	1	2	x	-2	-1	0	1	2	x	-2	-1	0	1	2
y	0,38	-0,45	0	0,45	-0,38	y	-0,4	-0,5	0	0,5	0,4	y	4,25	2,5	2	2,5	4,25

15

14

13