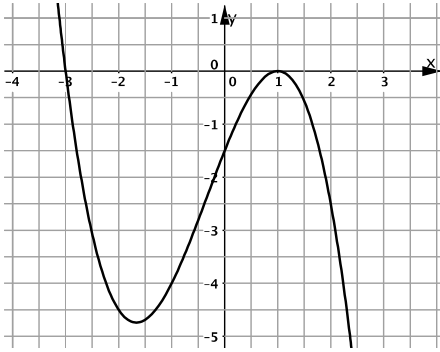
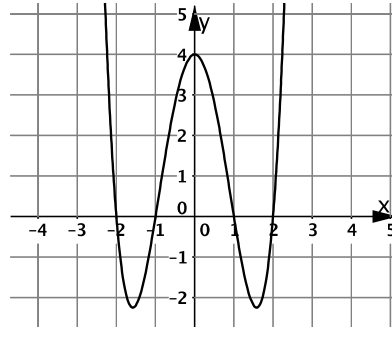


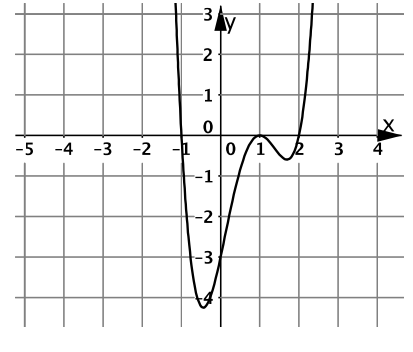
M\_10\_L\_08 | Ganzrationale Funktionen



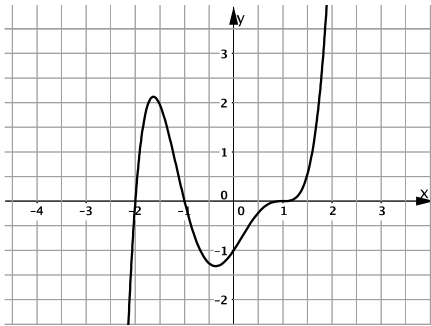
M\_10\_L\_08 | Ganzrationale Funktionen



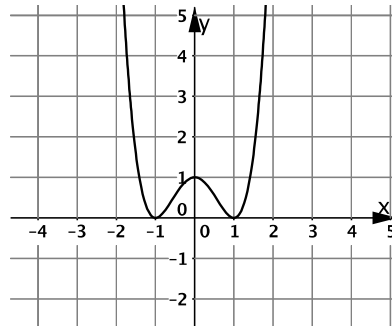
M\_10\_L\_08 | Ganzrationale Funktionen



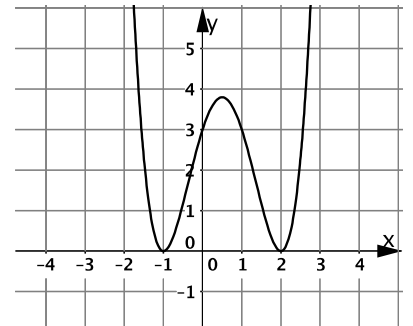
M\_10\_L\_08 | Ganzrationale Funktionen



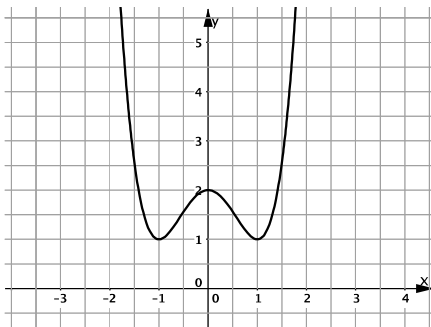
M\_10\_L\_08 | Ganzrationale Funktionen



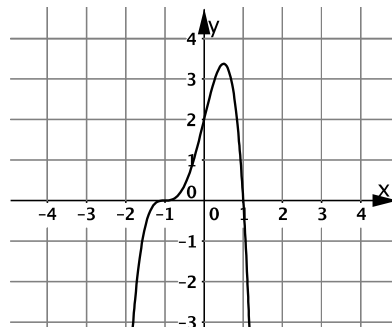
M\_10\_L\_08 | Ganzrationale Funktionen



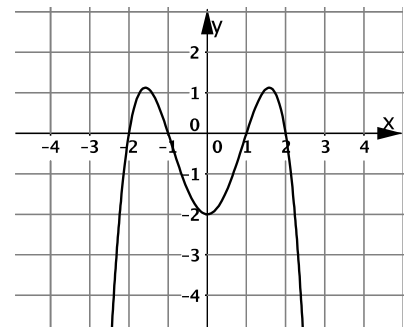
M\_10\_L\_08 | Ganzrationale Funktionen



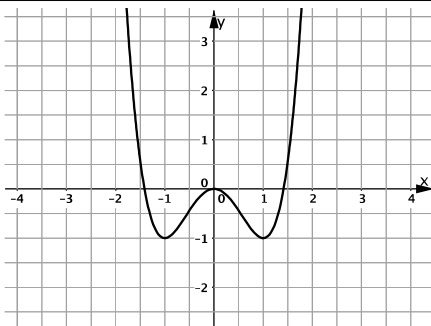
M\_10\_L\_08 | Ganzrationale Funktionen



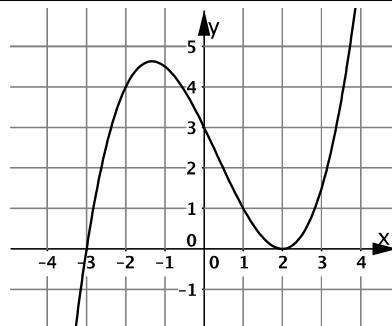
M\_10\_L\_08 | Ganzrationale Funktionen



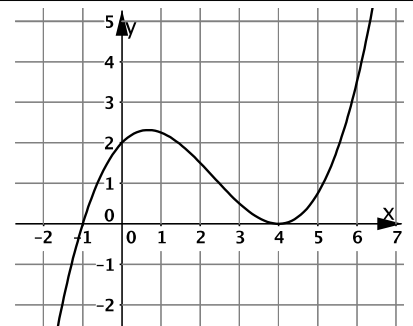
M\_10\_L\_08 | Ganzrationale Funktionen



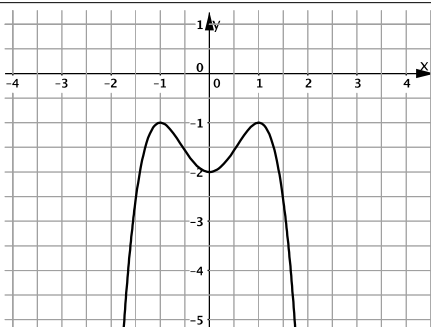
M\_10\_L\_08 | Ganzrationale Funktionen



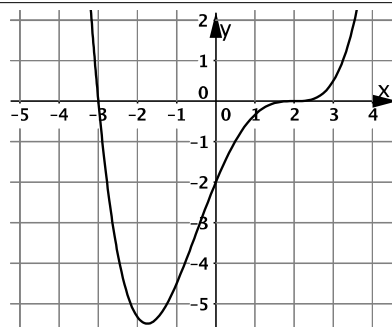
M\_10\_L\_08 | Ganzrationale Funktionen



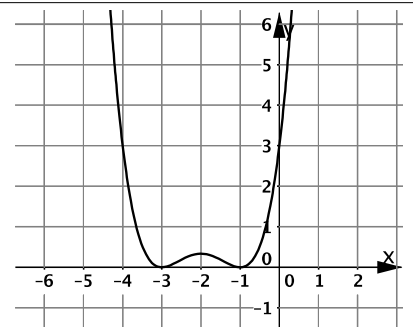
M\_10\_L\_08 | Ganzrationale Funktionen



M\_10\_L\_08 | Ganzrationale Funktionen



M\_10\_L\_08 | Ganzrationale Funktionen



$$f(x) = \frac{3}{2}(x+1)(x-1)^2(x-2)$$

oder

$$f(x) = \frac{3}{4}x^4 + \frac{3}{2}x^3 - \frac{9}{2}x^2 - \frac{15}{2}x - 3$$

03

$$f(x) = (x+2)(x+1)(x-1)(x-2)$$

oder

$$f(x) = x^4 - 5x^2 + 4$$

02

$$f(x) = -0,5(x+3)(x-1)^2$$

oder

$$f(x) = -0,5x^3 - 0,5x^2 + 2,5x - 1,5$$

01

$$f(x) = \frac{3}{4}(x+1)^2(x-2)^2$$

oder

$$f(x) = \frac{3}{4}x^4 - \frac{3}{2}x^3 - \frac{9}{4}x^2 + 3x + 3$$

06

$$f(x) = (x+1)^2(x-1)^2$$

oder

$$f(x) = x^4 - 2x^2 + 1$$

05

$$f(x) = 0,5(x-1)^3(x+1)(x+2)$$

oder

$$f(x) = 0,5x^5 - 2x^3 + x^2 + 1,5x - 1$$

04

$$f(x) = -\frac{1}{2}(x+2)(x+1)(x-1)(x-2)$$

oder

$$f(x) = -0,5x^4 + 2,5x^2 - 2$$

09

$$f(x) = -2(x+1)^3(x-1)$$

oder

$$f(x) = -2x^4 - 4x^3 + 4x + 2$$

08

$$f(x) = (x+1)^2(x-1)^2 + 1$$

oder

$$f(x) = x^4 - 2x^2 + 2$$

07

$$f(x) = \frac{1}{8}(x+1)(x-4)^2$$

oder

$$f(x) = \frac{1}{8}x^3 - \frac{7}{8}x^2 + x + 2$$

12

$$f(x) = \frac{1}{4}(x+3)(x-2)^2$$

oder

$$f(x) = 0,25x^3 - 0,25x^2 - 2x + 3$$

11

$$f(x) = (x+1)^2(x-1)^2 - 1$$

oder

$$f(x) = x^4 - 2x^2$$

10

$$f(x) = \frac{1}{3}(x+3)^2(x+1)^2$$

oder

$$f(x) = \frac{1}{3}x^4 + \frac{8}{3}x^3 + \frac{22}{3}x^2 + 8x + 3$$

15

$$f(x) = \frac{1}{12}(x+3)(x-2)^3$$

oder

$$f(x) = \frac{1}{12}x^4 - \frac{1}{4}x^3 - \frac{1}{2}x^2 + \frac{7}{3}x - 2$$

14

$$f(x) = -(x+1)^2(x-1)^2 - 1$$

oder

$$f(x) = -x^4 + 2x^2 - 2$$

13